

## Parents Guide to Pupil Premium Funding

### What is Pupil Premium?

Pupil Premium is government funding allocated to schools for children who are eligible for free school meals (FSM), or have been at some point over the last six years, for children who have been in care for more than six months (child looked after) and those children whose parents are employed by the armed forces.

### What you can do if you think your child is eligible for pupil premium funding?

You need to talk to the school office and ask them for a form to fill in. Once this is completed the school will inform you if your child is to participate in the scheme.

The pupil premium teacher may need to collect additional information about your child. This may include additional information from you and other people working with your child or relevant professionals to discuss and agree together the approach best suited for your child.



### What can school do to help your child?

School will provide additional funded enrichment activities such as; school trips, guest visits and School will provide differentiated support for your child in small groups outside of class to ensure that your child is achieving their potential. School will appoint a member of staff to monitor your child's attainment, progress and well being.

### What can the Pupil Premium Teacher do to help?

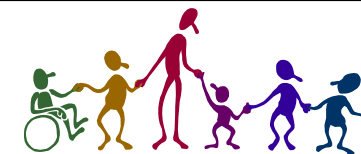
The pupil premium teacher will work with the class teacher, teaching assistants and other members of staff to ensure that the best possible provision is being provided for your child.

Enrichment activities may include:

- Funded school trips to enrich the child's learning experience.
- Special guest authors, scientists, illustrators, and mathematicians working with your child.

Academic activities may include

- Support with reading, writing and



### What can parents and carers do to help?

Attend any meetings to discuss your child's time in school.

Complete a DBS form so that you can accompany any trips that your child may participate in.

If you have any concerns about your child, contact the class teacher, or pupil premium teacher to discuss these.

### What if there is concern about a child's progress?

A very small number of children may continue to have difficulties even with enhanced additional provision.

Where a Special Educational Need is identified, the Senco and teaching staff will put appropriate evidence-based interventions in place. These are provided as part of a graduated approach, which includes regular review of the progress made and adaptations to the support provided as required.

You should be kept fully informed about what is happening and your permission will be asked if any additional information is obtained from outside specialists.

The government have produced a detailed parents guide pupil premium. Please ask the office for a copy.

<https://www.gov.uk/government/publications/2010-to-2015-government-policy-education-of-disadvantaged-children/2010-to-2015-government-policy-education-of-disadvantaged-children#issue>



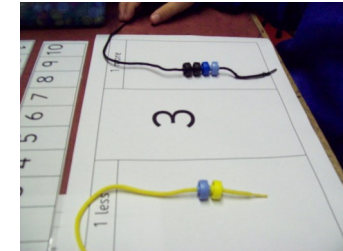
Feel free to contact the following person for any additional information:

Mr Walton/  
Mrs Edmonds

Summerhill Infant School  
Clouds Hill Road  
St George  
BRISTOL  
BS5 7LE

## Summerhill Infant School

### Pupil Premium



This leaflet aims to give you a brief guide to Pupil Premium at Summerhill Infant School.

